

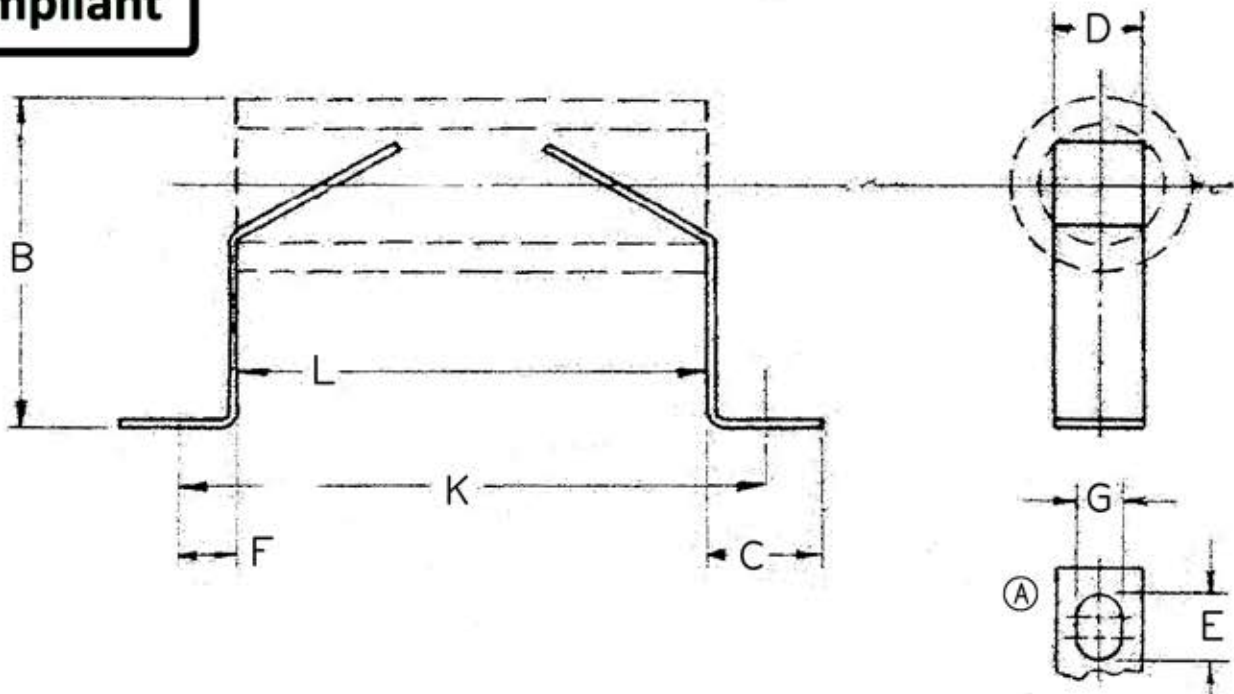
RENFREW ELECTRIC
RESISTOR CLIPS

DESCRIPTION

DRAWN DATE CHECKED DATE APPRVD DATE

RELEASED

**RoHS
Compliant**



BRACKET TYPE	USED WITH RESISTOR		B	C	D	E	F	G	MOUNTING HOLE CENTERS
	TYPE	D/A							
Z-1	D	9/16	1 3/8	9/16	5/16	5/16 (A)	1/4	.173	K = (L + 1/2)

SPECIFICATIONS:

- Bracket fits inside cores of 25W-50W Wirewound type resistors and remain in place by spring tension.
- Mounting Screw size (Maz.) #10 Screw
- Copper based material

TOLERANCES:

UNLESS OTHERWISE SPECIFIED,
Angles $\pm 0.5^\circ$
.XX ± 0.010
.XXX ± 0.005
Fractions 1/64

Z-1: 25W-50W

RoHS Compliant Mounting Bracket for Wirewound Resistors

SIZE A	DWG. NO Z-1	ELECTRONIC FILE 40-7193-03-35	REV A
SCALE: NTS		U.O.M.: INCHES	

ALL RIGHTS RESERVED. DISCLAIMER: ALL STATEMENTS AND TECHNICAL INFORMATION CONTAINED HEREIN ARE BASED UPON INFORMATION AND/OR TESTS WE BELIEVE TO BE ACCURATE AND RELIABLE. SINCE CONDITIONS OF USE ARE BEYOND OUR CONTROL, THE USER SHALL DETERMINE THE SUITABILITY OF THE PRODUCT FOR THE INTENDED USE AND ASSUME ALL RISK AND LIABILITY WHATSOEVER IN CONNECTION THEREWITH.